



財煦企業有限公司
TSAI SHIN ENTERPRISE CO., LTD.
東莞家源五金製品有限公司
DONGGUAN JIAYUAN HARDWARE CO., LTD.

臺灣公司 Company in Taiwan

臺北縣三重市中正北路315巷6弄49號

1F, No. 49, Alley 6, Lane 315, Chung Cheng N. Rd., SanChung,
Taipei, Taiwan, R.O.C.

Tel: +886-2-2987 3378 Fax: +886-2-2987 3398, 2987 0467

E-mail: g1201208@ms48.hinet.net ; tech.metal@tsaishin.com.tw

Http://www.tsaishin.ttnet.net ; www.tsaishin.com.tw

大陸總部公司 Company in China

廣東省東莞市長安鎮新安村(街口)花果山路

Hua Guo Shan Rd., Xin An Village (Jie Kou), Chang An Town,
Dong Guan City, Guang Dong Province, China.

Tel: +86-769-8531 6356, 8507 3868 Fax: +86-769-8531 9799

E-mail: jiayuan888@vip.163.com Http://www.ginlai.com

香港辦公室 Hongkong Office

詠禎電子五金有限公司

Y&Z Electronic Hardware Limited



財煦企業有限公司
TSAI SHIN ENTERPRISE CO., LTD.
東莞家源五金製品有限公司
DONGGUAN JIAYUAN HARDWARE CO., LTD.

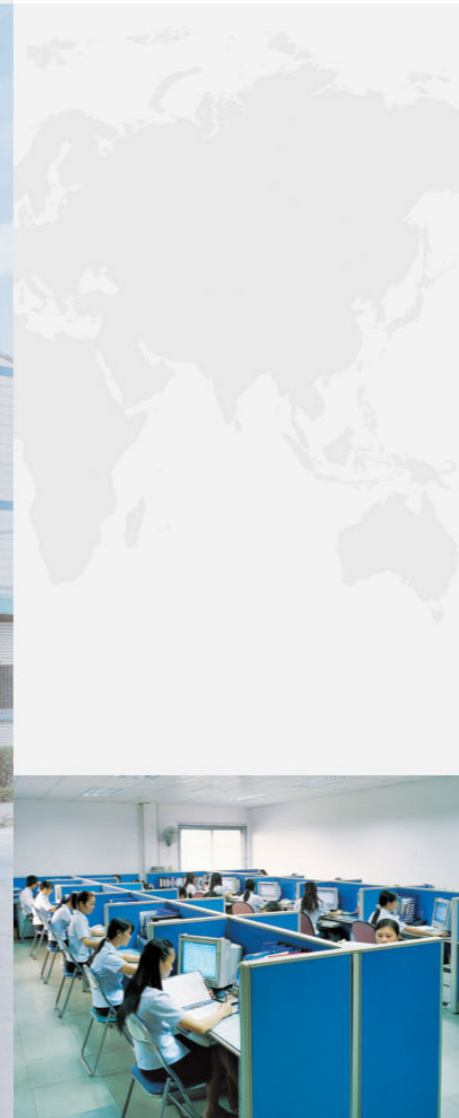
專業五金配件生產商

PROFESSIONAL
HARDWARE
ACCESSORIES
PRODUCTION
ENTERPRISE

廣東五金製品有限公司
13922919046 0769-22383402



工廠概貌 Factories overview



辦公室 Office

企業簡介。

Company Profile

財照企業、東莞家源五金製品有限公司，是一家中型台資企業。公司以“科技領先”為方針，由最初專業生產鏈條擴大到如今鋅鋁合金模具設計，模具製作，壓鑄，沖壓，加工，CNC，噴砂，拋光，絲印，鐳射，噴塗，滴膠，電鍍，陽極氧化等，製作各種燈飾，門把手，標牌，手機配件，音響配件，面板，卫浴配件，汽車配件，皮製品、手機鏈、珠鏈、鑰匙扣，禮品，等各行金屬壓鑄及沖壓配件。

客戶的產品在本公司內從設計、加工到完成交付，相互依賴，採取互補，一貫作業，減少產品運輸上的難度，最大限度滿足客戶需求，並不斷的研發新的加工、電鍍技術滿足顧客需求。現自建廠房4500平方米，員工200人，擁有一批資深的專業技術人員，配置有高科技的模具加工中心，為客戶提供新款、優質、精緻、完美的各類產品。

在全體員工的共同努力和廣大客戶及社會各界鼎力支持下，現產品已遍佈歐美及亞太市場，並且每年在世界各地的知名國際展覽會中都可以發現財照的足跡。

Tsai Shin Enterprise Co., Ltd. DongGuan Jiayuan Hardware Co., Ltd. is a mid-size Taiwanese enterprise, based on our principle "technology keeps ahead", we started from producing metal chains, and now Develop in many different areas, like zinc alloy (mold-opening, die-casting), Stamping, CNC carving, Sand blasting, polishing, Screen printing, laser, spraying, Drops of glue, electroplating, Anodic oxidation, etc. Our main products are all kinds of led lamps accessories, door handle, Metal name plate, Mobile phone accessories, Audio metal accessories, ATM keyboard, bathroom metal accessory, auto metal spare parts, leather, mobile phone strap, various hardware, high-quality key rings, gift, etc. and All kinds of metal die-casting and stamping parts.

Customer's goods started from product design to processing to complete delivery in the company, We trust and depend on each other, reducing the difficulty of product transportation, the biggest meet the needs of the guests, and constantly develop new processing, plating technology to meet guests' needs. The factory building is over 4500 square meters, and more than 200 employees, including a staff of senior professional technicians, allotted a mold center which provides new-style, high-quality, elegant and perfect products.

With all the supports from our staff and customers, now our products sold popularly in Far East, America and Europe, our name: "Tsai shin" appears in every famous exhibition around the world.

經營宗旨：客戶在心中 品質在手中 技術領先中
Customers in heart, quality in hand, technology in the lead

管理體系：質量、環境和職業健康安全一體化
Quality, Environment, and Occupational Health and Safety all in one

品質政策：全體動員，尋求根源，及時處理，持續改進
以數據替代百分比，達成零缺點
Mobilize all, Seek to the root, Fix in time, Keep improving
Replacing the percentage with date and actual numbers, achieve Zero-Defective.

企業文化。

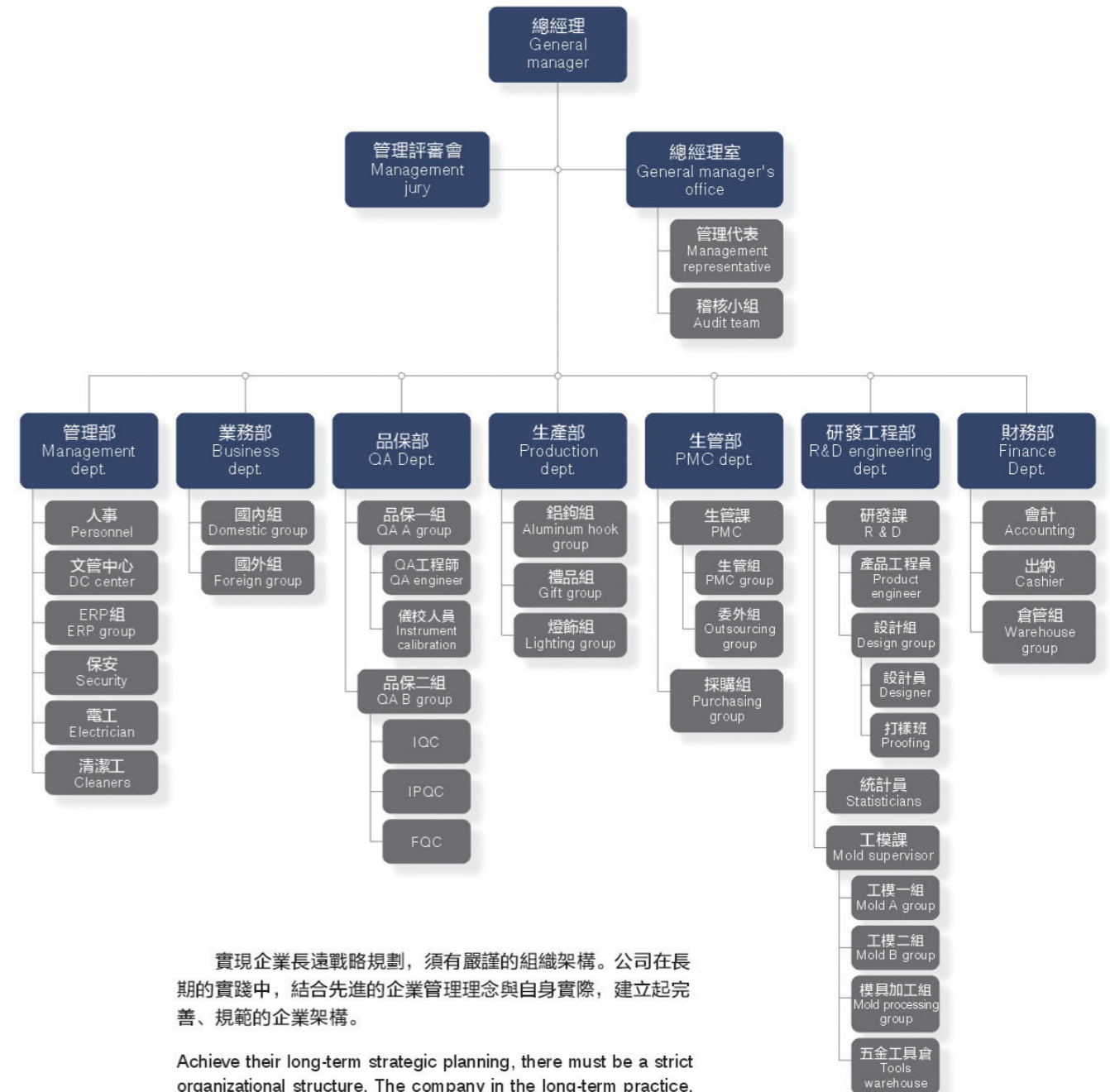
Corporate Culture



ISO 9001:2000质量管理体系认证
ISO 9001: 2000 Quality Management System Certification

组织架构。

Organization Chart



實現企業長遠戰略規劃，須有嚴謹的組織架構。公司在長期的實踐中，結合先進的企業管理理念與自身實際，建立起完善、規範的企業架構。

Achieve their long-term strategic planning, there must be a strict organizational structure. The company in the long-term practice, combined with advanced management concepts and their own reality, establish a comprehensive, standardized enterprise architecture.

模具加工。

Mould Workshop



用心鑄造高質量、高精密的零件，必須具備精湛的工藝，成熟的技術，嚴把加工過程中的每道關口，模具採用進口鋼材加工而成，使得模具生產時質量穩定，維修率極低，為求一流的產品應對激烈的市場競爭。

Intentions of casting high-quality, high-precision parts, must have superb technology, mature technology, strict process each channel mark, use of imported steel mold processing, so that the mold production quality stable, low maintenance rate, in order to deal with first-class products fierce market competition.

M O U L D W O R K S H O P

生產環境。

Production Workshop



壓鑄車間 Die-casting workshop



CNC數控車間 CNC machine workshop

優質的產品是企業打入世界市場的強大武器。為創造至優至尊的產品，公司配备了35~250T鋅合金壓鑄機(7台)，160~400T鋁合金壓鑄機(3台)，通過優化工藝製造一流的產品，為創一流企業奠定了基礎。

High-quality products into the market is a powerful business weapon. For creating superior to the supreme products, the company is equipped with a 35-250T zinc alloy die casting machine (7 units), 160-400T aluminum die casting machine (3 units), by optimizing the process to improve manufacturing first-class products, first-class enterprises laid foundation.

生產環境。

Production Workshop

每一道工序我們都力求細緻，每一個細節都力求完美。公司把生產管理系統，檢測試驗系統，質量控制系統等融合於所有產品生產過程中，廣泛應用先進的技術，生產和檢驗設備，真正做到高品質、高標準服務於國內外客戶。

Every process we have sought to detail, every detail is perfect. The company production management system, testing system, quality control system, integrated in the production process of all products, extensive application of advanced technology, production and testing equipment, truly high-quality, high standards of service to domestic and international customers.



鐳射車間 Laser workshop



注塑車間 Plastic injection workshop



品檢車間 QC workshop



組裝車間 Assembly workshop

Door Handle Series | 門拉手系列

Door Handle Series | 門拉手系列



Panel Plate Series | 面板系列

Audio Accessories Series | 音響系列



Bathroom Metal Accessory Series | 衛浴系列

Bathroom Metal Accessory Series | 衛浴系列



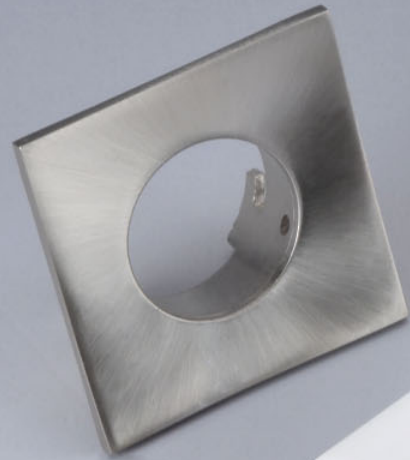
Lamps Accessories Series | 燈飾系列

Lamps Accessories Series | 燈飾系列



Lamps Accessories Series | 燈飾系列

Lamps Accessories Series | 燈飾系列



P90072方形外框



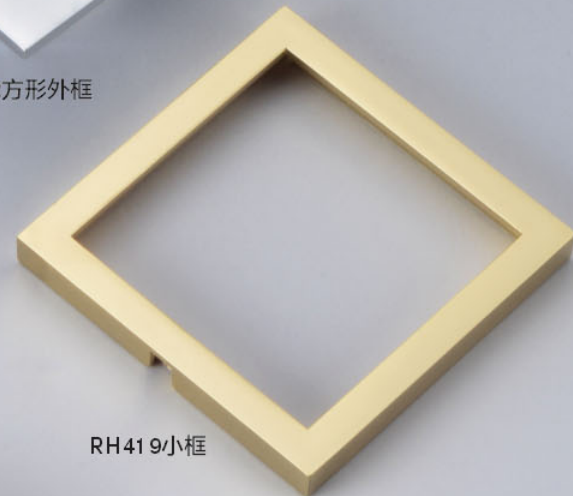
P90072方形外框



P90072方形外框



P90108圓形面蓋



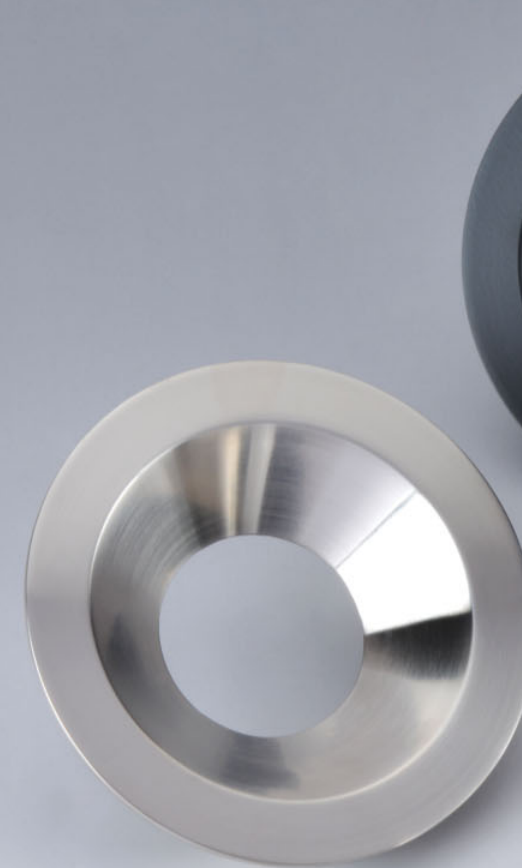
RH419小框



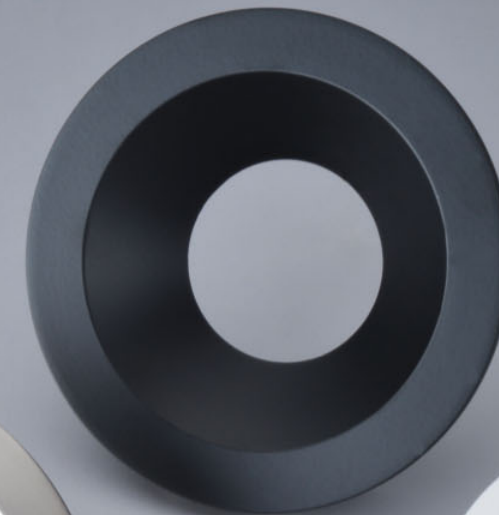
P90108圓形面蓋



RH419小框



有邊圓形錐面前蓋(砂鏢)



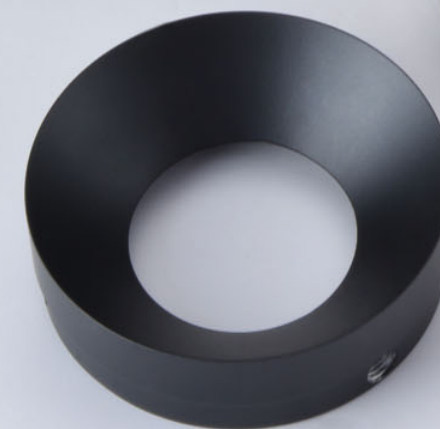
有邊圓形錐面前蓋(烤黑)



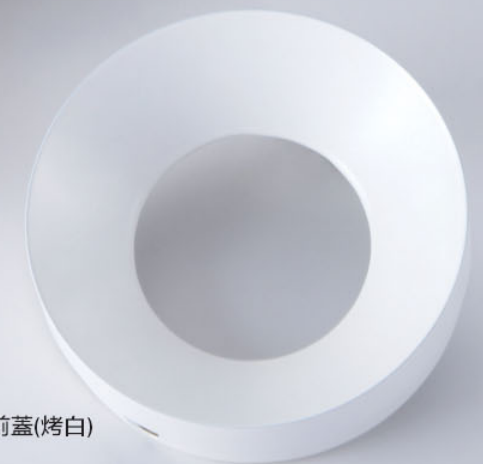
有邊圓形錐面前蓋(烤白)



無邊圓形錐面前蓋(砂鏢)



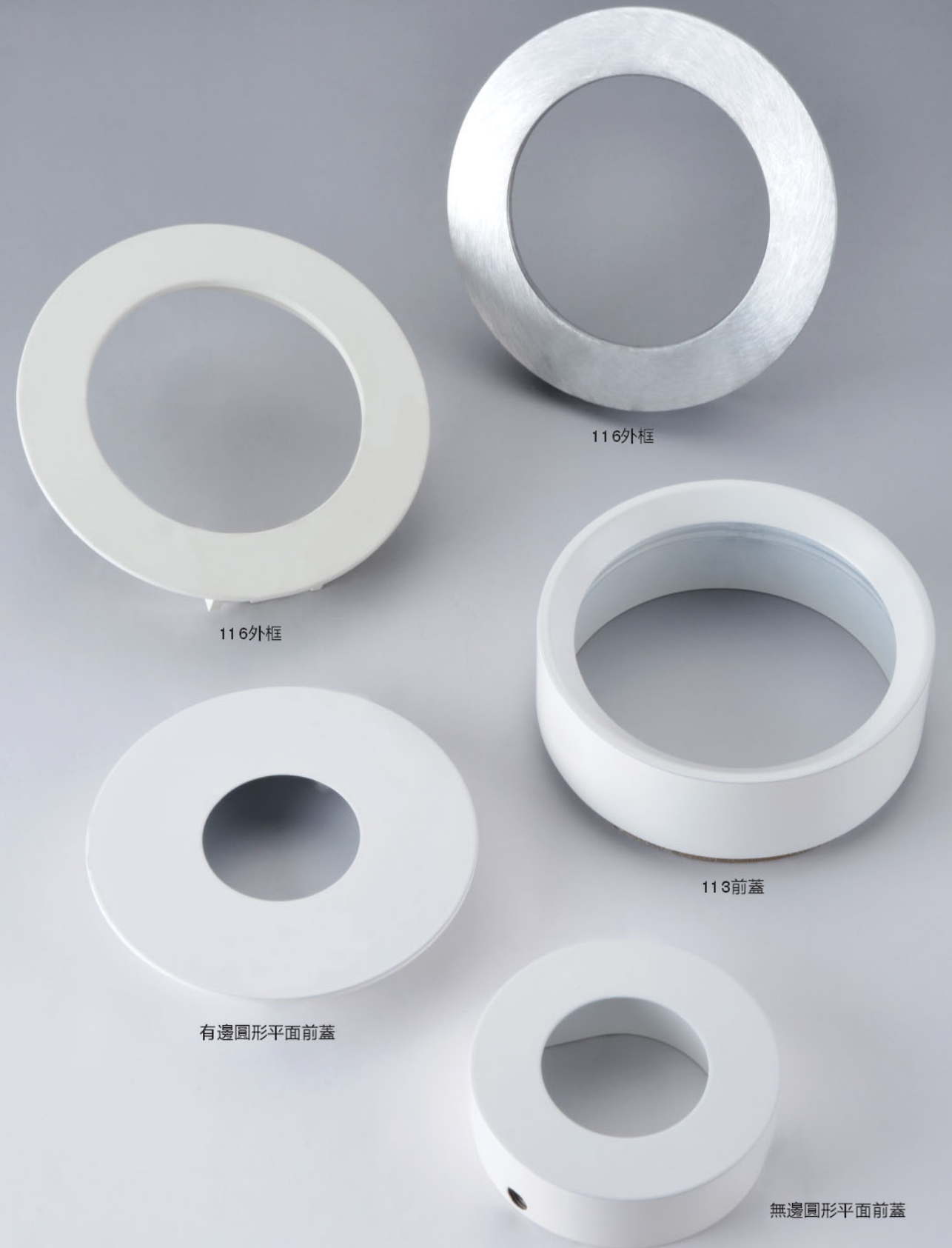
無邊圓形錐面前蓋(烤黑)



無邊圓形錐面前蓋(烤白)

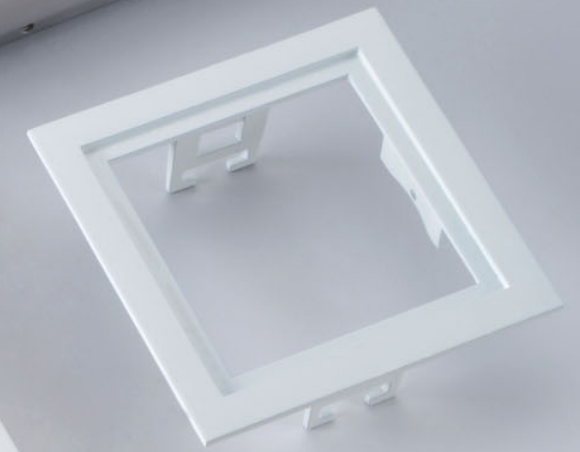
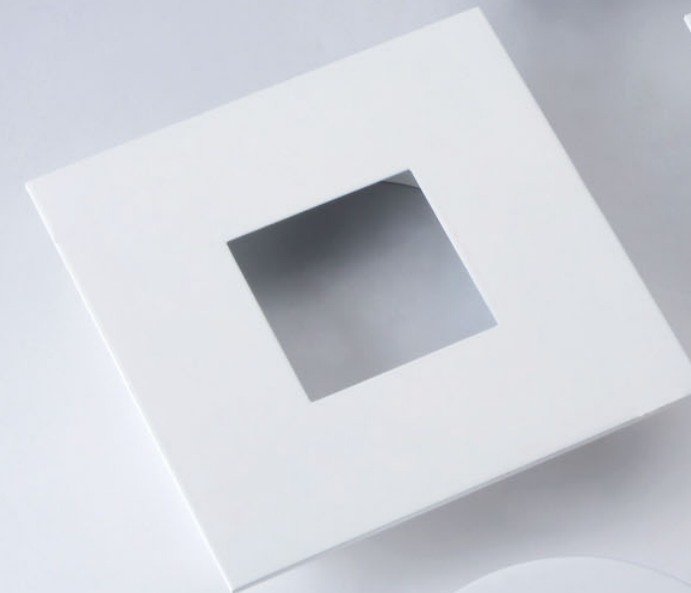
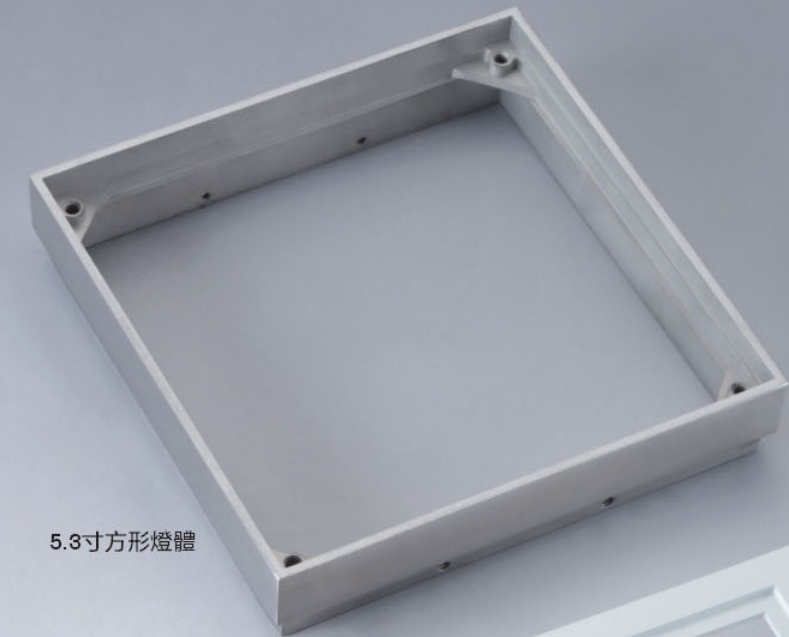
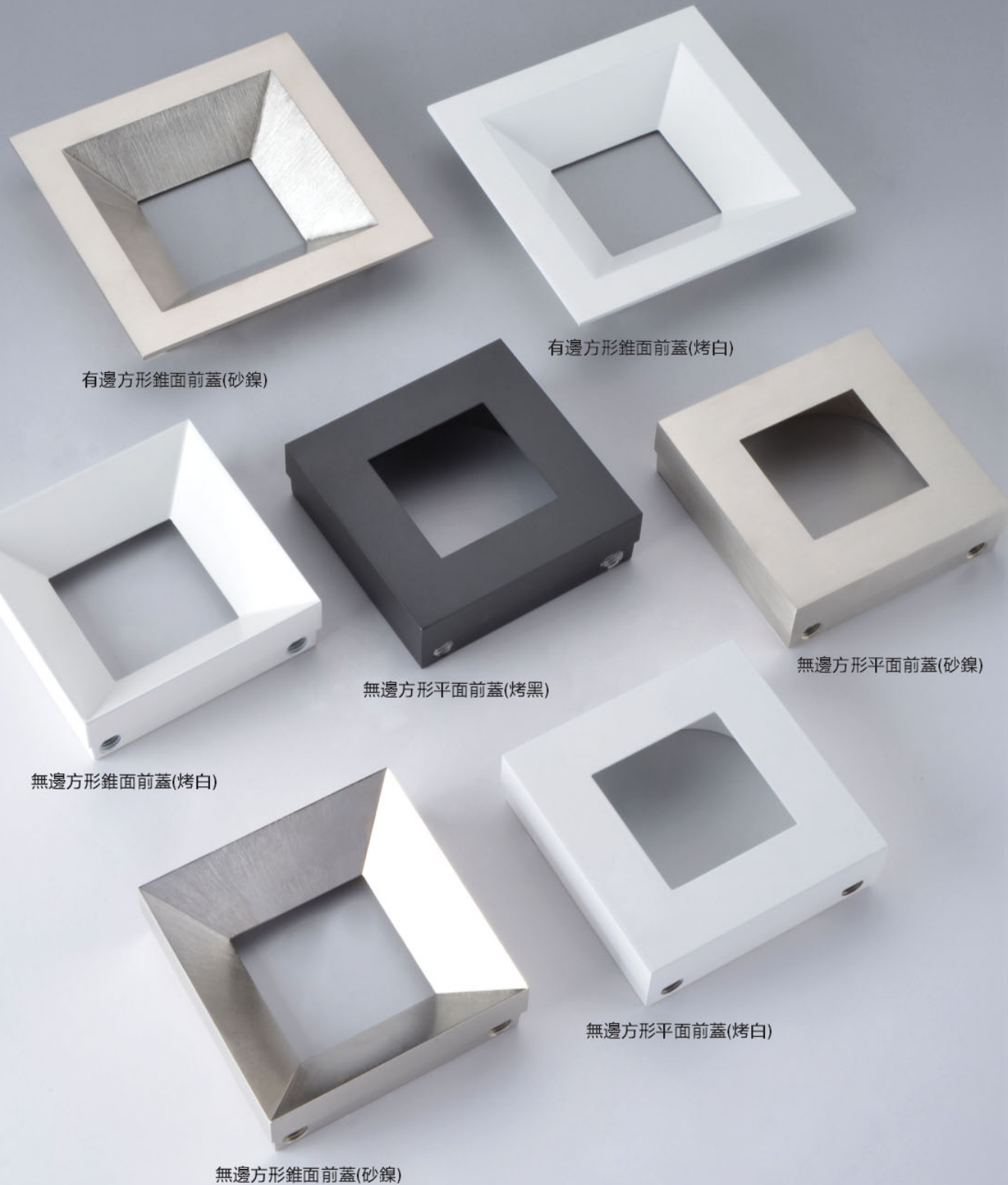
Lamps Accessories Series | 燈飾系列

Lamps Accessories Series | 燈飾系列



Lamps Accessories Series | 燈飾系列

Lamps Accessories Series | 燈飾系列



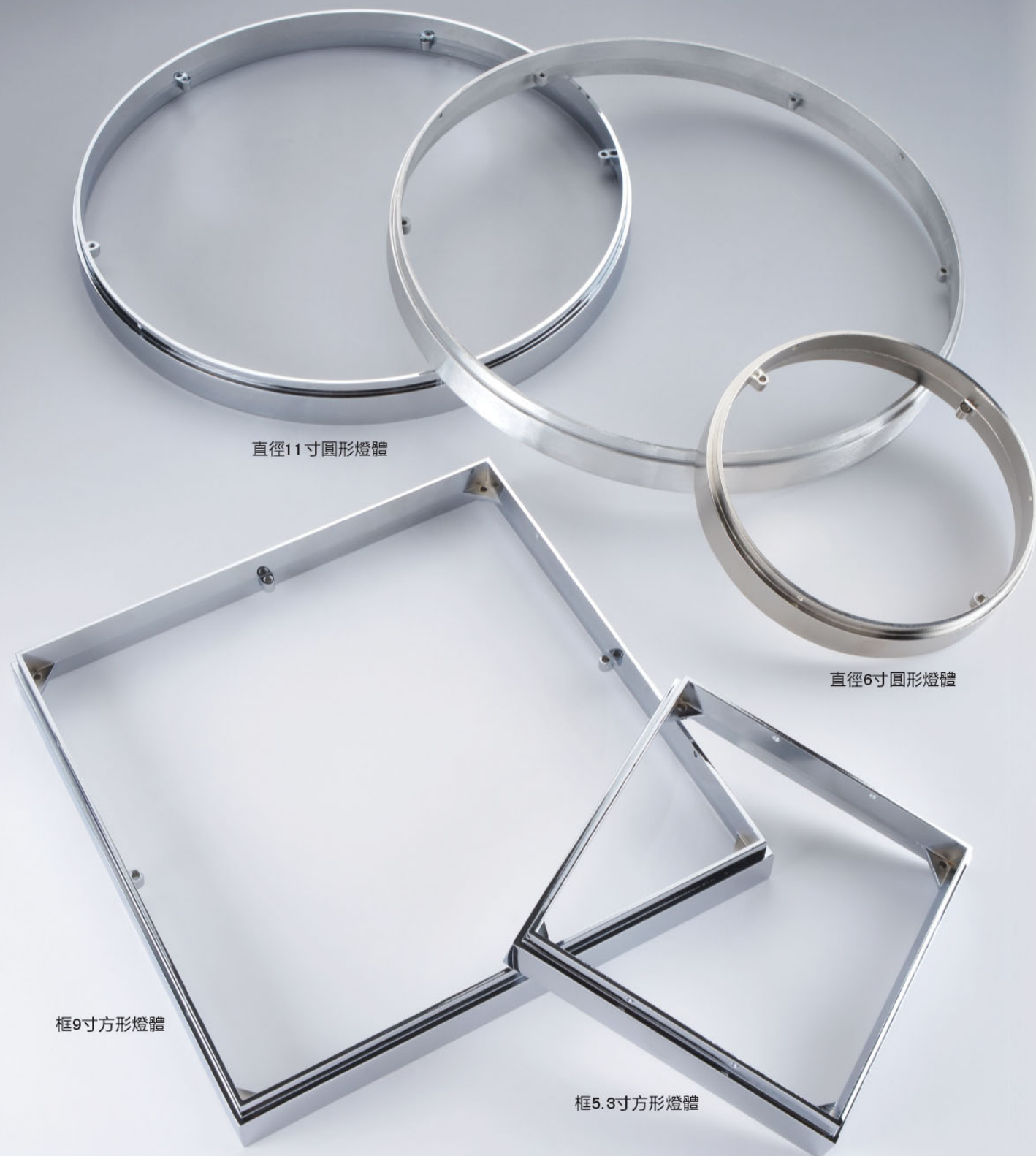
Lamps Accessories Series | 燈飾系列

Lamps Accessories Series | 燈飾系列



Lamps Accessories Series | 燈飾系列

Lamps Accessories Series | 燈飾系列



Lamps Accessories Series | 燈飾系列

Lamps Accessories Series | 燈飾系列

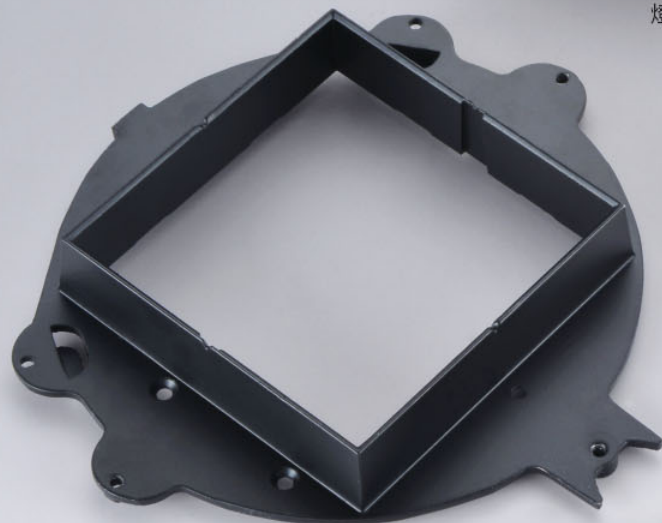


Lamps Accessories Series | 燈飾系列

Lamps Accessories Series | 燈飾系列



燈罩



方孔燈體支撐架



MONTE壁燈座



圓孔燈體支撐架



RH203R中框(烤白)



P90107散熱片(厚叻+封)



RH203R中框(还)



P 901 07散熱片(烤白)



P90073散熱鑄體



P90073散熱鑄體(厚叻+封)

Nameplate Series | 標牌系列



未來展望。

Future Prospects

三十多年來，家源五金一直以精密的設備、先進的技術、嚴格的質量以及對市場的敏銳，新穎的產品設計跨越了許多國家，並且逐步從一家OEM工廠轉型成為多元化的ODM工廠，得到了歐、美、日等國內外各大電子科技公司的支持和認證。在這不斷進步的時代，家源五金以更專業、更創新、更先進的技術研發我們的產品，以更誠懇、更積極、更負責的態度竭誠回饋廣大的客戶群，共同進步發展，一起創造五金科技的未來。

In the past 30 years, Jiayuan Hardware has explored through many countries with the precision standard equipment, the progressive technique, and the fashionable customized-design. Eventually, we transferred ourselves from a traditional OEM factory to a multifunctional ODM company, and our high professional standard has been recognized by many technology name-brands. We understand the world is moving forward every single moment; therefore, we must keep trying and improving in order to provide our customers the perfect service. In the future, Jiayuan Hardware will be even more professional, more innovational, and more advanced to develop new products for our customers; and with a sincere, positive, and responsible attitude to serve all of our valuable clients, together, we will create an age of metallic-technological innovation.

